



Weekly Views Epping Views Primary

Issue No. 2
4th February 2021

EVPS Values

Respect
Honesty
Caring
Excellence
Responsibility

School Motto

'From Little Things Big Things Grow'

PLEASE REMEMBER we are an 'egg & nut free' school: no eggs, peanut butter, nuts or nutella spread to come to school at any time. Please assist us to keep our students safe. Thank you.



Principal Views

EVPS COVID Safety Plan

Please note that we are adjusting our Safety Plan in accordance with DET and General Health updates and in line with our school organisation. Please continue to access updates via Compass.

Changes to begin on Monday 8th February are:

- ♦ Parents of Prep, Year 1 and 2 students can enter the school yard from 3:15pm in the afternoons.

Arrangements in place now:

- ♦ All students including Prep students are to be left at the gates in the morning. Please note the gates will be opened at 8:45am. Preps to enter from the designated gate on Dunolly Street or Mansfield Street where there will be staff to escort the Preps to their rooms.
- ♦ Older students are encouraged to collect their younger siblings from their rooms and wait in prearranged designated areas for their parent or carer.
- ♦ **Please remember that you need to practise social distancing whether in the office, grounds or outside the school gates.**
- ♦ Anyone entering a school building especially the office must be wearing a mask.
- ♦ Anyone entering the office needs to sign in on the QR code.

CORRECT EVPS UNIFORM

It is important that all of our students wear our correct school uniform. **Plain black** pants, shorts, skirts and skorts **with no logos** are required. Sunsmart hats need to be worn for recess and lunch breaks as well as outdoor PE and sport activities. The uniform shop is open Tuesday, Wednesday and Thursday or you can order any day on QkR and the uniform order will be sent to your child's classroom the next day.

SCHOOL GATES

School gates will be unlocked at 8:45am each school day. Teachers will be on Yard Duty from 8:45am. Students should not arrive at school before this time. Before School Care operates from 6:30am for parents who need to drop their children off earlier than 8:45.

CSEF APPLICATIONS

If you have a Prep child starting this year you will need to apply for the CSEF for the Prep child at the office. If any of your information has changed then you will need to complete a new form for your other child/ren. Please note you must have a current Health Care Card as of 27/1/2021 to be eligible for CSEF. If you are on an immi card and do not have a health care card then special consideration may apply. Please speak with the office staff if you think this may apply to you.

IMPORTANT

BE RESPECTFUL OF OUR NEIGHBOURS

You will see a letter further in the newsletter from a local resident explaining their frustration at parents parking in their driveways etc. Please note that you need to abide by local traffic laws when parking in and around the school. Do not park in people's driveways and definitely do not leave your car in the driveway. We highly recommend that you park several streets away and arrange for your children to walk to you or else you walk to the gate. Older students can collect their younger siblings from their classrooms and then they can walk together to meet you.

MEET AND GREET INTERVIEWS

On Tuesday 16th February all students will finish school at 1:30pm and will need to be collected at this time. OSHC will operate from 1:30 if you require care. Please bring your child with you to the Meet and Greet interview as the teacher and student will be discussing their individual learning goals at this meeting. Bookings are open on Compass for the interview times. Please do not book back to back meeting times unless your children are in the same class or their rooms are next door to each other as all of the time allowed is needed for each student.

LUNAR NEW YEAR

Best wishes to all our families celebrating the Lunar New Year this weekend and extra special wishes if you are born in the year of the Oxen.



Pauline Kubat: Principal
Pauline.Kubat@education.vic.gov.au

Keep your hands and feet to yourself.

School Mantras

Everyday Counts.

Reduce, Re-use, Recycle, Re-Think
Sustainability: It's our responsibility

We don't swear at Epping Views!

2021 Dates

DATE	EVENT	PAYMENT DUE	YEAR LEVEL
3rd Feb—24th Feb	Life Ed	CLOSED	Year 1, 3 and 5
4th, 9th, 10th, 11th Feb	7-am-8am Swimming Trials	<u>See Page 3 for details</u>	
16th Feb	Meet & Greet	Whole school 2.00-7.30pm	
3rd, 10th, 17th, 24th Feb	Prep Rest Day	-	Prep
12th Feb	1SS Sport Round 1	10th Feb	Year 5 and 6
24th Feb	Year 3 Camp	Friday 5th Feb	Year 3

Payment due date is now advertised in the newsletter.

It is essential that payments are made before the due date if you wish for your child to be included in the event.

DID YOU KNOW?
1.30pm FINISH ON
THE 16TH FEB
DON'T FORGET TO
BOOK YOUR
MEET AND GREET

Weekly Views
Epping Views Primary School
20 Mansfield Street, Epping 3076
P: 8401 3791 F: 8401 3793
epping.views.ps@edumail.vic.gov.au
www.eppingviewps.vic.edu.au

Be aware of where you are parking

Could you please assist your neighbours in the adjacent street to your school?

We have ongoing issues with parents obstructing our lane way; more often, they park in our driveways and block our garages. Except for school holidays, this is a twice-daily occurrence, with multiple offenders.

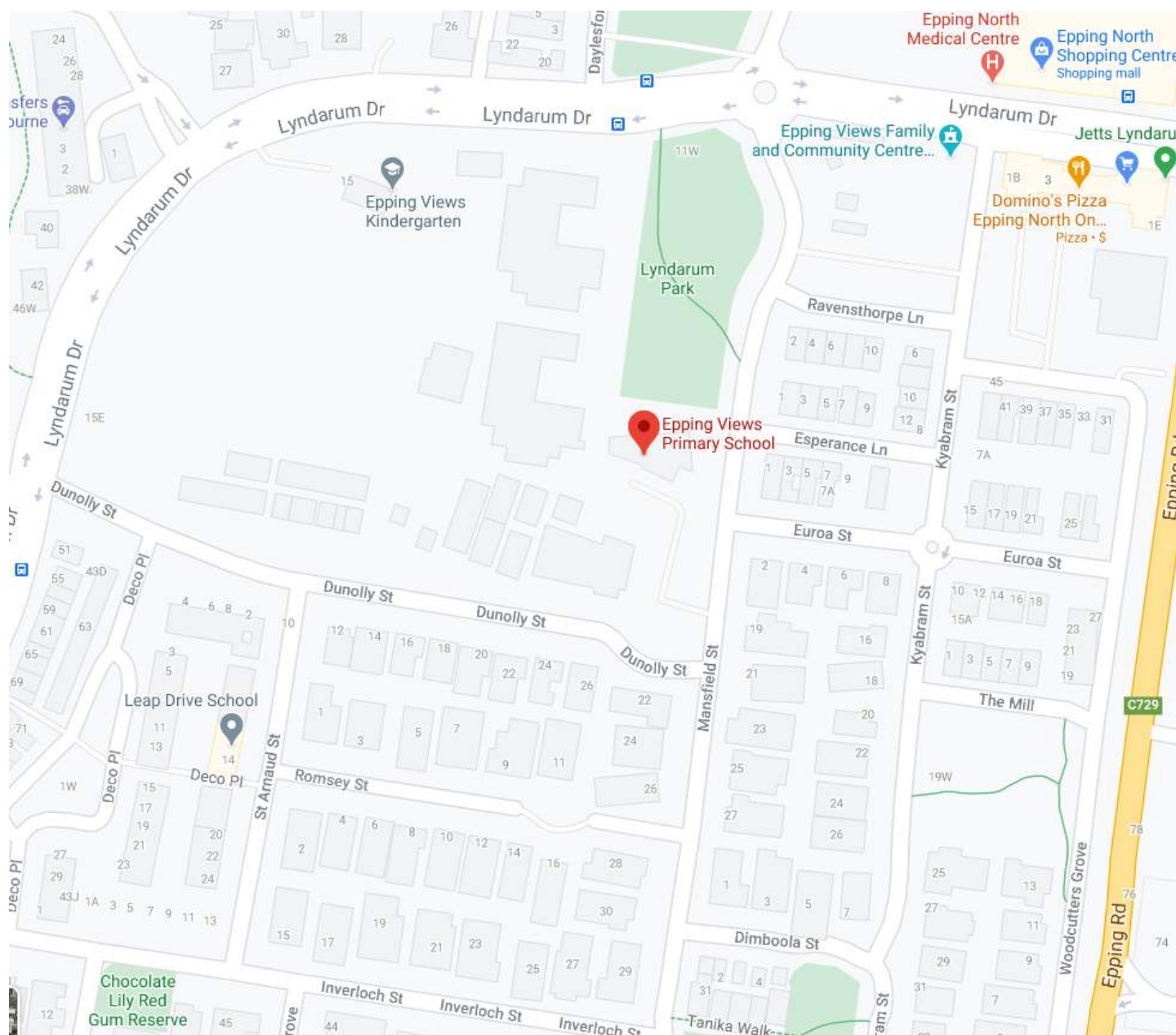
Unfortunately, they do not kindly move their vehicles even when asked politely. They are parking on private property, and legally, it constitutes trespass.

Esperance Lane is an access lane for private residents and not a thoroughfare.

With the influx of new families, perhaps they are unaware? The signage for no parking is very clear, and Local Laws are vigilant in issuing fines.

Kind regards,

The residents living around Epping Views Primary



Message from the School Council President...

Hi,

On behalf of School Council, I would like to welcome back the returning students, teachers and staff to a new School Year, and especially, a warm welcome to the new students and new staff to our School community.

School Council will be renewing our focus on funding for a School Gym this year and we will be calling on the School Community to help us in our securing funding for a much needed School Gym. If you would like to help in this area, please contact the office and they will pass your details onto me.

There will be a call in next month or so for nominations for representatives to join School Council. It is a great opportunity to have a say and input into how the school operates, so if you would like to nominate, please keep an eye out for the nomination forms when they come out.

Lets all hope that this year will be a little less hectic than last year.

Stay safe, stay well,

Wayne Mark

School Council President.

Message from the Office...

Hello Parents, Caregivers and Friends,

As you may have seen the office is extremely busy at this time of year.

We ask that you please be patient as we work through supporting not only you, the parents, but the students, staff and wider community.

Our uniform days have changed for 2021. We are now open Tuesdays, Wednesdays and Thursdays. As of Tuesday 9th February the uniform shop will be available by appointment only, until further notice.

We are asking parents to make use of QkR during this busy period to order your child's uniform online and it will be delivered to your child's grade. If uniform is not available on QkR, it simply means it is out of stock and has been ordered.

Compass is our best friend! We are happy to teach you how to use Compass, but please be aware we do not take payments over the counter.

The newsletter is published every Thursday afternoon. It includes important dates, upcoming events and activities in our school. We strongly encourage everyone to read the newsletter to keep up to date.

Kind Regards,

The Office Team

SUNSMART HATS

Epping Views is a Sunsmart school. This means between September and April students and staff are required to wear sunsmart hats when outside.

There are many students coming to borrow spare hats from the office.

Please ask your child if they know where their hat is and remind them to bring it to school.

If you need to purchase a new school hat you can via QkR and it will be sent to your child's classroom.



Late Arrivals and Early Dismissals

Students are welcome into the school yard at 8.45am in the mornings with school starting at 9.00am. If your child arrives after 9.15am please send them to the office to be signed in and collect a late pass. If your child goes straight to the classroom, you will receive a message saying your child is absent.

It is extremely important that students are not being picked up from school early. Not only does it impact your child's learning but all of those in their classes. We ask families to make appointments outside of school hours and to explore other options such as after school care or other family members if you cannot collect your child at 3.30pm.

Welcome Back

A big welcome back to all EVPS students and a special welcome to our new students and 2021 Preps. It is a great feeling having our students back in the school grounds and ready to learn.

Coming to school can be overwhelming for new students and Preps. Please be assured our staff are experienced in dealing with this and will make contact with you if any concerns arise.

If you, as a parent, have any concerns you can email the Assistant Principal for your child's year level:

Prep-1 David: David.Whewell@education.vic.gov.au

2,3,4 Anita: Anita.Osavkovska@education.vic.gov.au

5-6 Cam: Cameron.Black@education.vic.gov.au



Be Caring

PAP—Shae	For being welcoming to all her new friends in Prep AP
PSM—Elma	For helping her peers settle in to school. Well done Elma
1JS—Jordan	For always caring for others
1TB—Luxmi	For being a caring friend and including others
1EP—Viraaj	For always including others in his games
1MC—Hope	For looking after and caring for all your new friends in 1MC
1AT—Manreet	For being such a kind and welcoming member of our class
1SG—Emilie	For including others in your games
2BL—Liana	For always helping others when needed
2KH—Cassie	For using kind words and helping others
2AP—Ibrahim	For sharing his resources with his peers
2Rm—Ben	For always helping others with classroom activities
2KW—Rhythm	For using his manners and including others in games and activities
2LW—Alexia	For always including others. Keep it up
2CB—Zara	For sharing with others
3MB—Artin	For being caring and helping other pack up
3ST—Lara	For supporting classmates with new routines
3KI—Divyansh	For being caring by including his class mates in games
3EA—Fatima	For suing you manners and helping others in the classroom
3SP—Aya	For being caring and welcoming to all students in 3SP
3JM—Farah	For speaking kindly and always helping others
3SM—Fatima	For helping your classmates when they got hurt. Thanks for being so caring
4LB—Nuu	For including others and using kind words and manners
4CU—Noah	For welcoming new students and including them in all your games/activities
4MR—Likhitha	For including new members of our class in her games
5SS—Zahra	For having a caring attitude towards her teachers and peers
5NW—Tabarak	For having a caring attitude towards others in the classroom
5ME—Jason	For helping other students and teachers. What a great start to the year.
5LB—Rayanjot	For being kind and including others during team building activities
5KK—Sirat	For helping others in the classroom
5JI—Harnaman	For helping others and speaking to your peers and teachers kindly
6JT—Saakhi	For using kind words and her manners in the classroom
6JP - Saanvi	For displaying the value of caring by looking out for her peers in need
6SB—Jozef	For always using kind words and manners
6NY—Alexia	For caring and apologising to express her regret for accidentally hurting a peer in the classroom.
6MP—Alexander	For using kind words and manners when speaking to others
6PT—Zach	For offering his time to help new students in the classroom and around the school.
6AS—Marshall	For helping and encouraging class members



City of
Whittlesea

PARKING AND SAFETY AROUND SCHOOLS

Speed



Look out for the reduced speed limit around schools and slow down to improve safety.

Yellow edge line



A driver must not stop on the side of a road marked with a yellow edge line.

Parking/Stopping signage



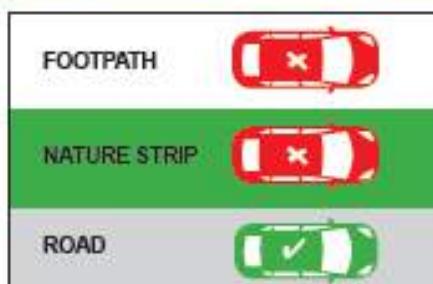
No stopping areas must be kept clear. If times/days are specified, restrictions are only applicable to the specified times/days. You cannot park in a P3 minute area for longer than three minutes.

School crossings



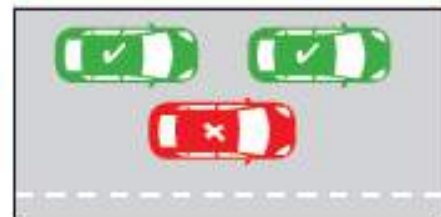
- Look out for flags and Crossing Supervisors
- You must stop for anyone waiting to cross, or who has started crossing
- Please remain stopped until the crossing is clear.

No parking on nature strips/footpaths



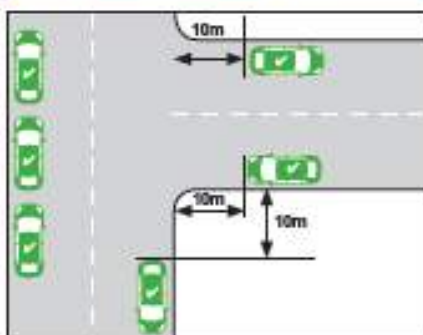
Parking is illegal on nature strips and footpaths.

Double parking



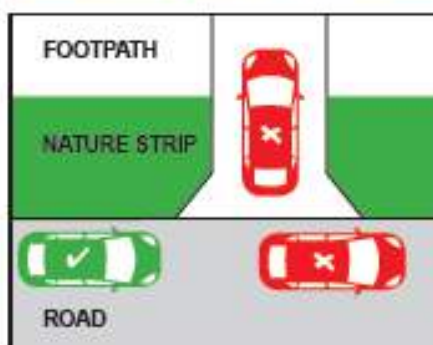
It is illegal to double park at any time. This affects the flow of traffic.

Within 10 metres of an intersection



A driver must not stop with any part of their vehicle within 10 metres of an intersection unless signed otherwise.

Stopping across driveways



It is illegal to, stop/park across a driveway unless you stay in the car are there for no more than two minutes and move immediately if required to do so to allow entry or exit by the owner/occupier.

3 metre gap for signage



At least 3 metres must be left between your vehicle and the centre dividing line to allow other vehicles to pass safely and not obstruct traffic.

What can you do to stay safe

- Supervise your children in or near traffic
- Walk or cycle to school with your child
- Respect all road rules, parking signs and instructions from authorities
- Wait on the same side of the street as your child
- Always let your child out of the kerb side of the car.

Free Telephone Interpreter Service

العربية 9679 9871 Italiano 9679 9874
 Ελληνικά 9679 9873 Македонски 9679 9875
 粵語 9679 9879 繁体中文 9679 9857

ਪੰਜਾਬੀ 9679 9879 Tiếng Việt 9679 9878
 தமிழ் 9679 9879 Other 9679 9879
 Türkçe 9679 9877



Tuning in to Kids

This programme provides a number of skills & strategies to help with everyday parenting challenges, based on emotionally tuned parenting. For parents of children aged 6 years - 11 years

Would you like to learn how to:

- Be aware and manage your emotions?
- Understand your child's emotions?
- Build attachment and teaching through emotional experiences?
- Help your child manage their emotions?
- Develop skills to assist your child in problem solving?

DATE: Thursdays (8 weeks)
11th February - 1st April 2021

TIME: 10.00am to 11.30am

WHERE: Zoom

COST: This session is free of charge but registration is essential



For bookings & inquiries contact: ParentZone on 03 8641 8900 or 0458 550 071

Email parentzone.northern@anglicarevic.org.au

PARENTZONE



Parent's Building Solutions - Primary

**Are you tired of yelling?
Want to understand why children
behave the way they do?
Do you want to discuss and share ideas
that work?
This 8 week parenting programme
helps you come up with solutions to
common parenting challenges.
Targeted at parents of children in the
primary years.**

DATE: Thursdays (8 weeks)
11th February - 1st April 2021

TIME: 11.00am - 12.30pm

WHERE: Zoom

COST: This session is free of charge but
registration is essential

For bookings & inquiries contact: ParentZone on
03 8641 8900 or 0458 550 071
Email parentzone.northern@anglicarevic.org.au



PARENTZONE



Parent's Building Solutions - Arabic

**Are you tired of yelling?
Want to understand why children
behave the way they do?
Do you want to discuss and share ideas
that work?**

**This 7 week programme is delivered in
Arabic for parents of children and
young people to share ideas and
strategies on how to manage the tough
times.**

DATE: Mondays (7 weeks)
8th February - 29th March 2021

TIME: 10.00am - 11.30pm

WHERE: Zoom

COST: This session is free of charge but
registration is essential

For bookings & inquiries for this session contact
Hanan at Broadmeadows Women's Community
House on (03) 9301 5250 or
Hanan.Elzanaty@anglicarevic.org.au



PARENTZONE